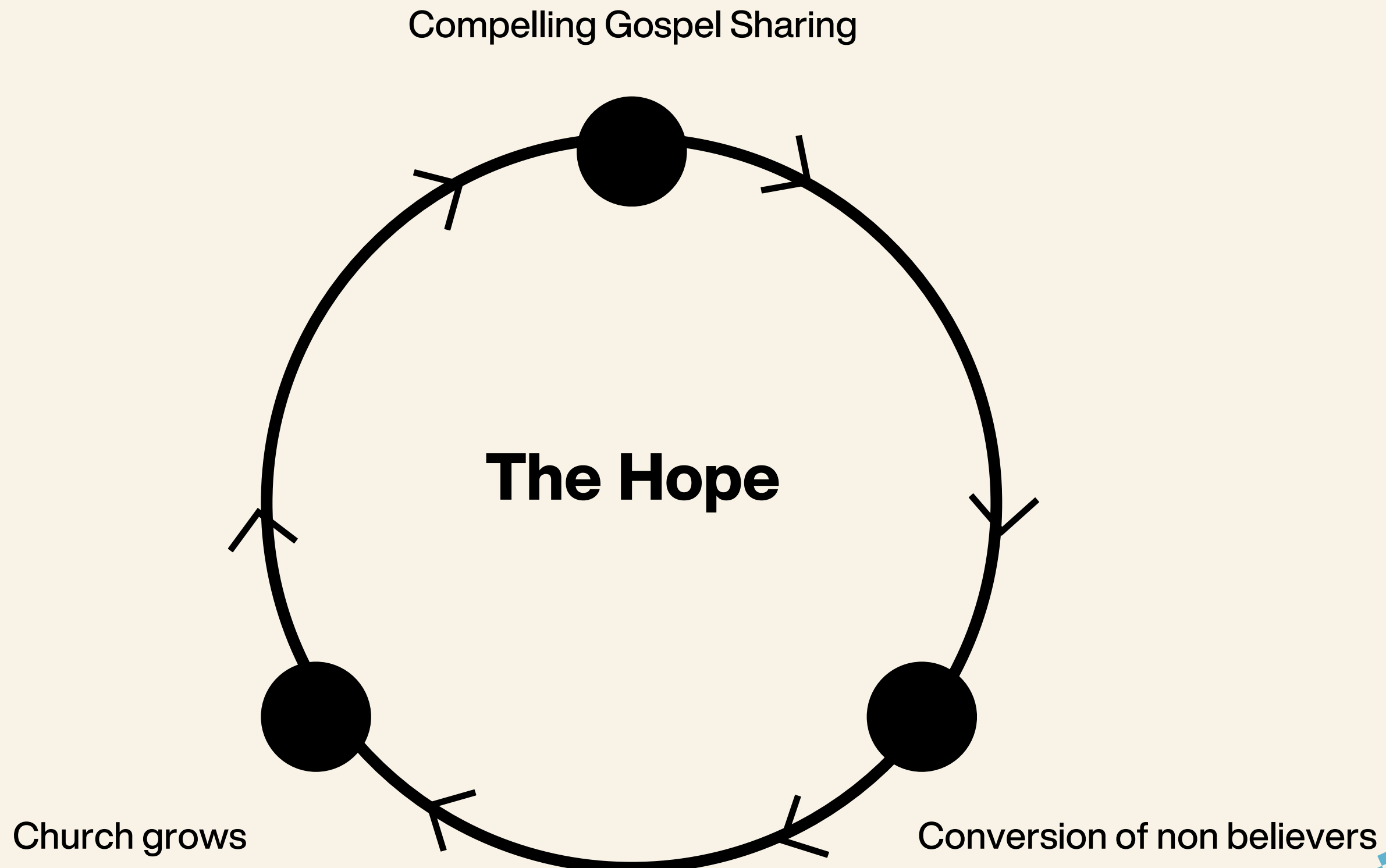
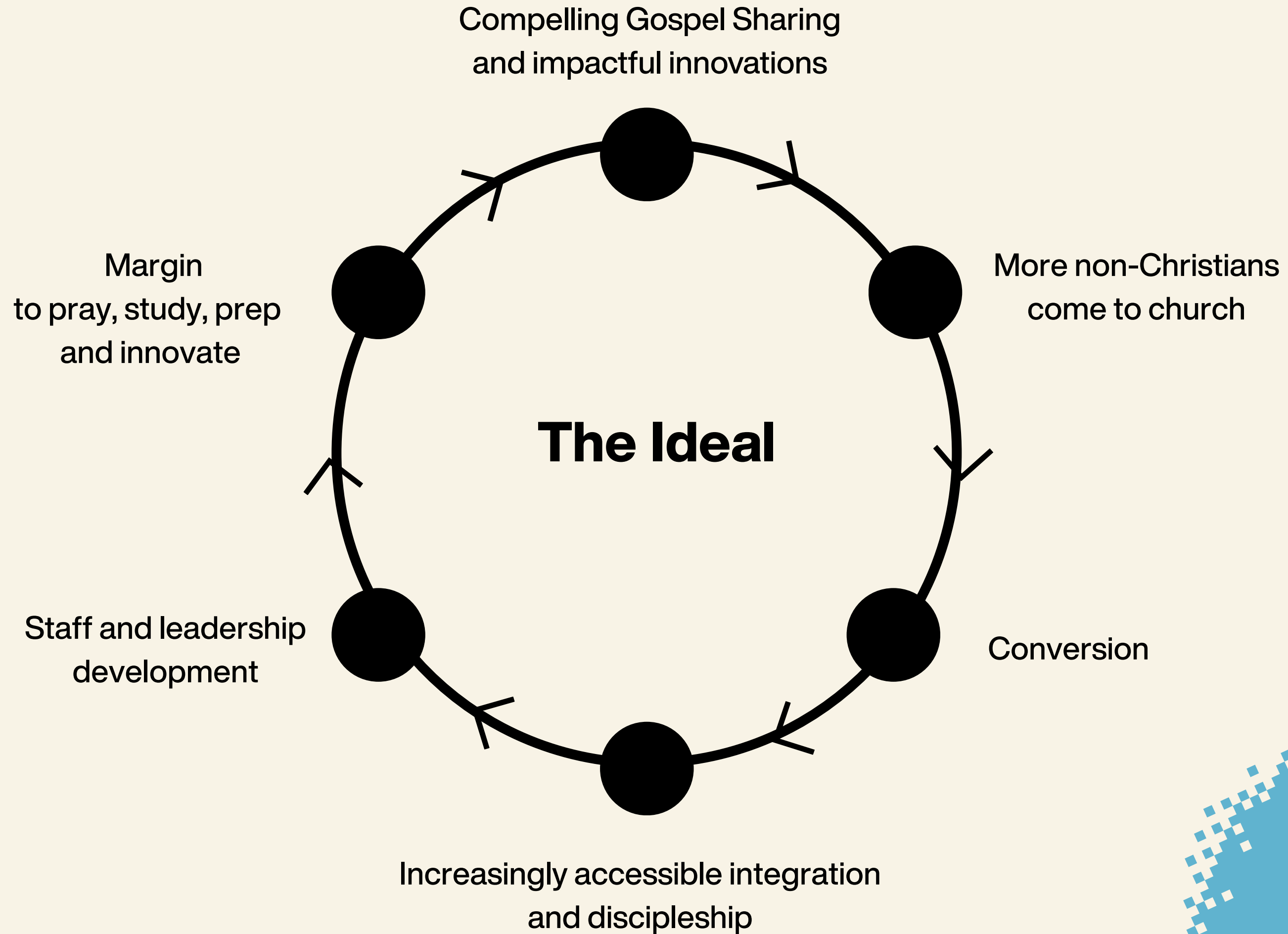


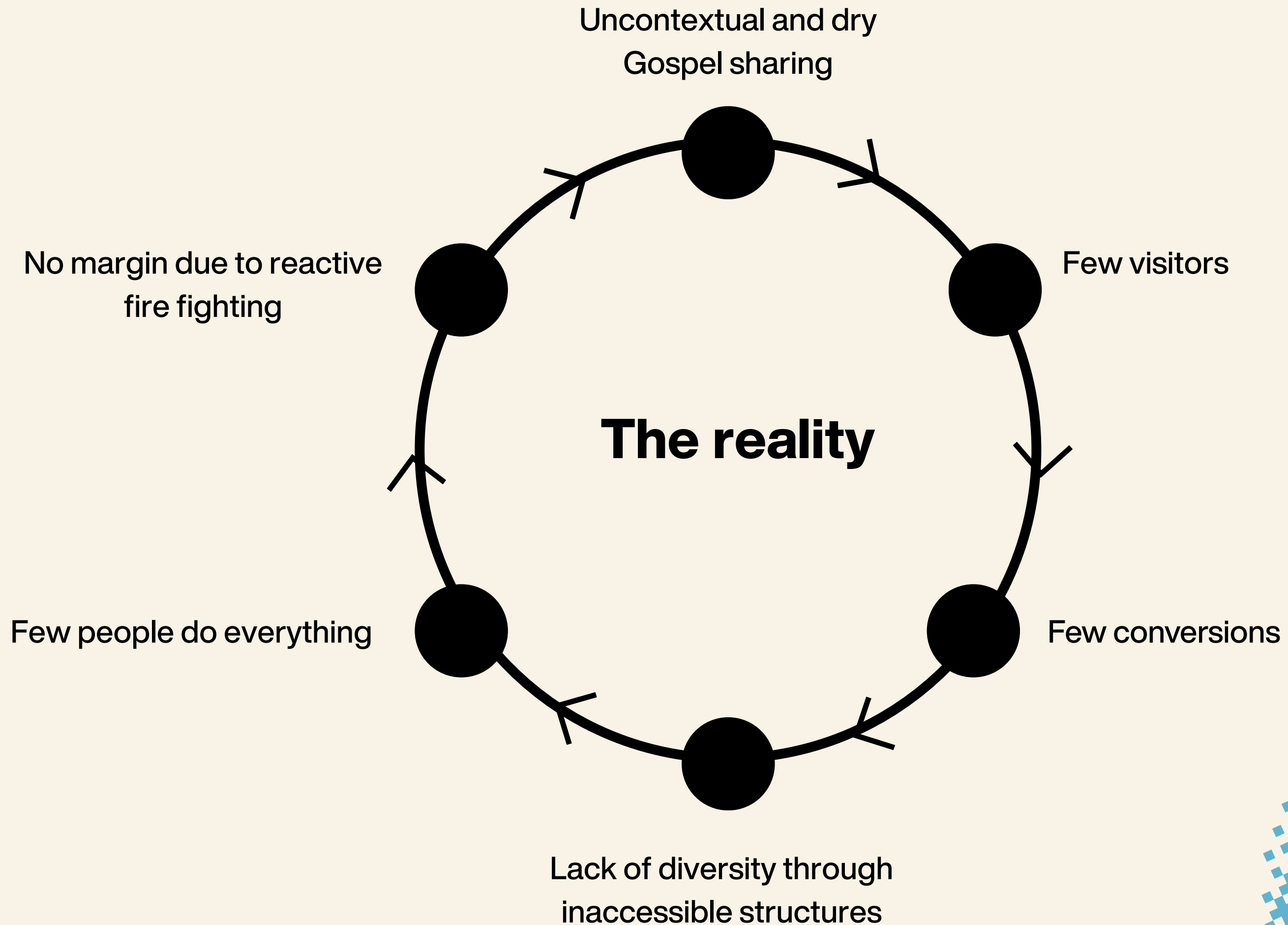


THE IMPACT OF TEAM CULTURE ON EVANGELISTIC EFFECTIVENESS

Matt Waldock



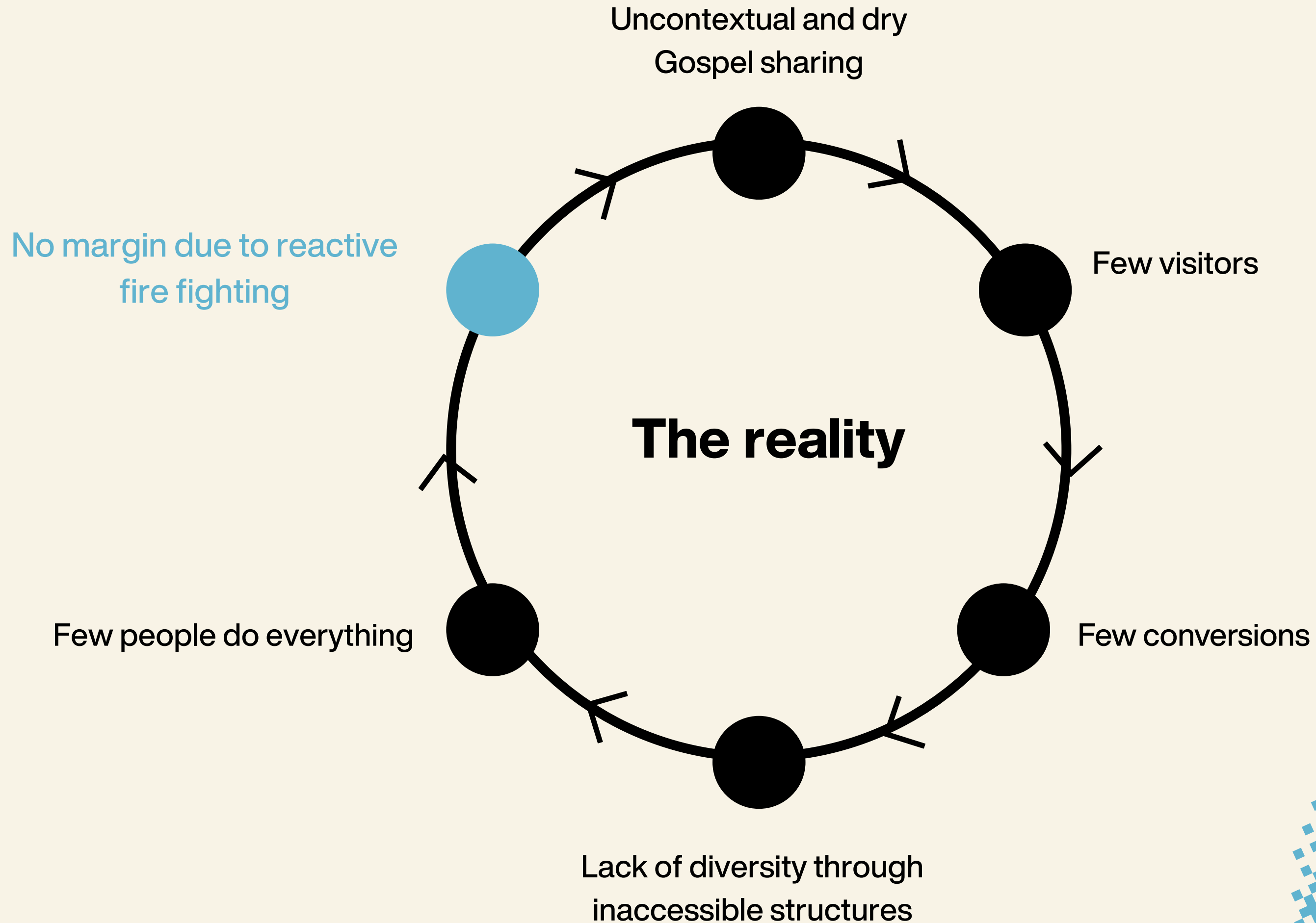




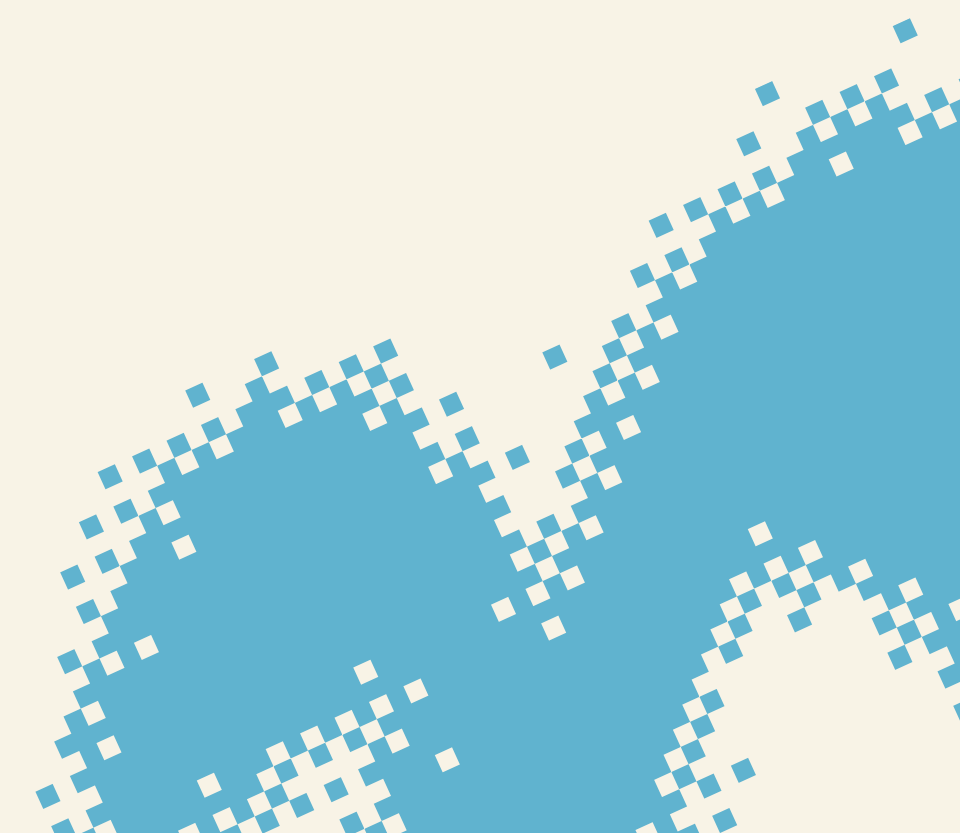
CULTURE

Culture is a tapestry of repeated
behaviours and patterns
that shape your church through
visible and invisible expectations





Two patterns to watch



Pattern 1

Identify how anxiety typically
shows up in your church



PATTERN 1: How anxiety shows up

1 #

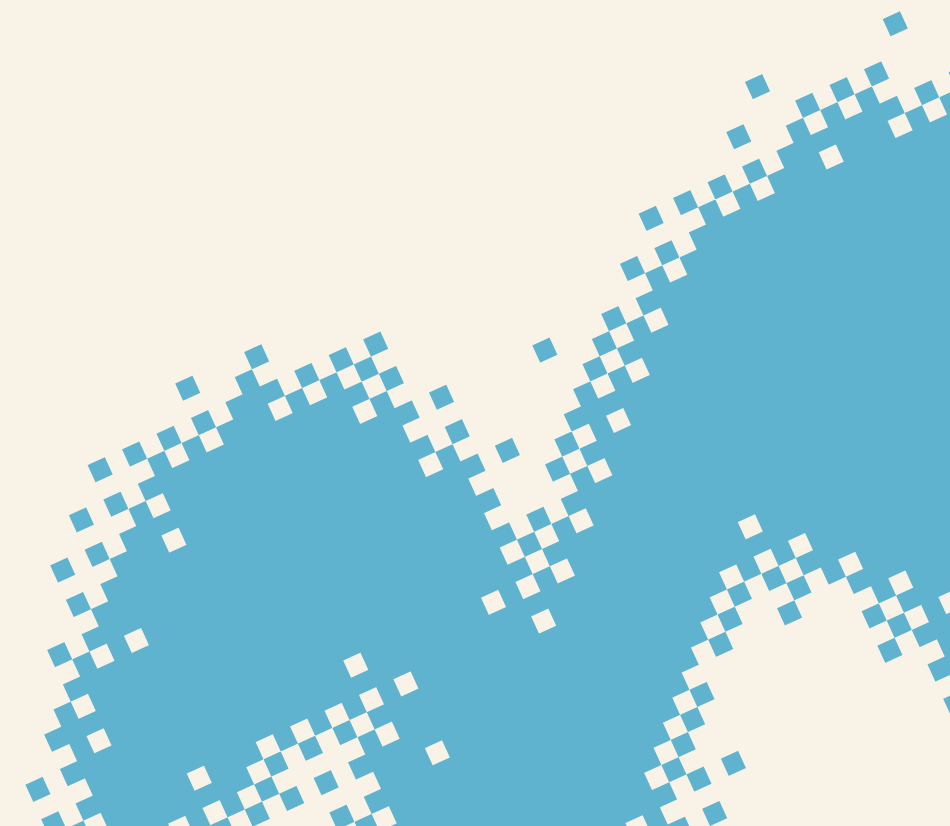
THE
AMBUSH



PATTERN 1: How anxiety shows up

2 #

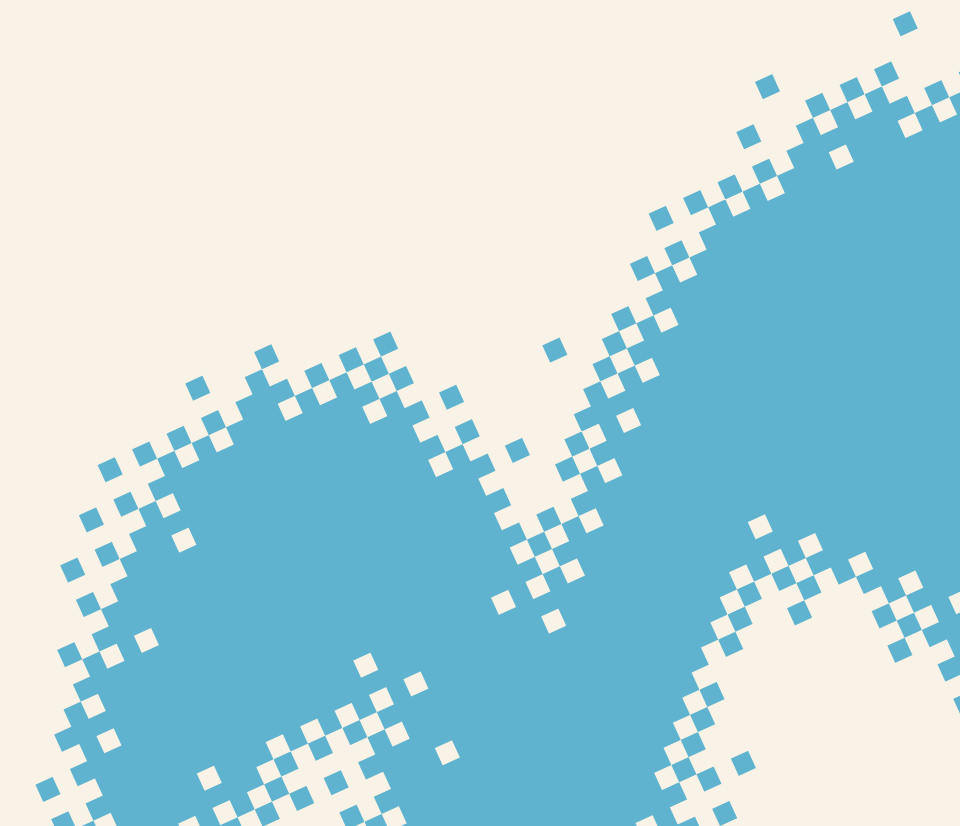
THE
REMOTE
STRIKE



PATTERN 1: How anxiety shows up

3 #

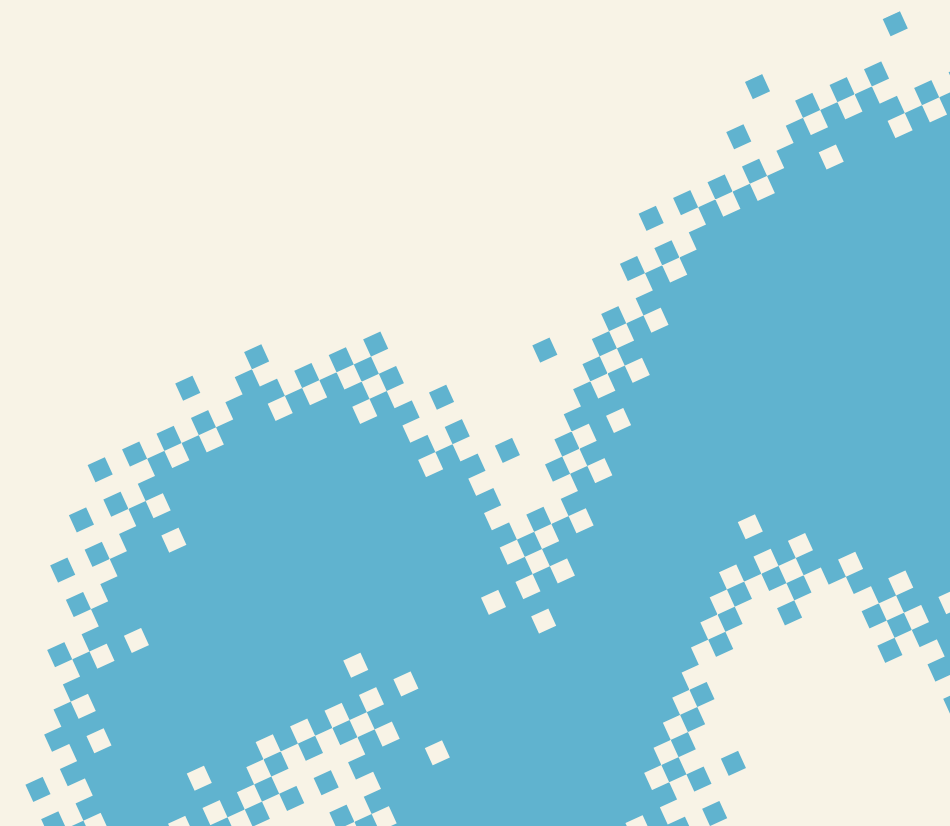
**PARKING
THE
BUS**



PATTERN 1: How anxiety shows up

4#

GAS
ATTACK



Pattern 2

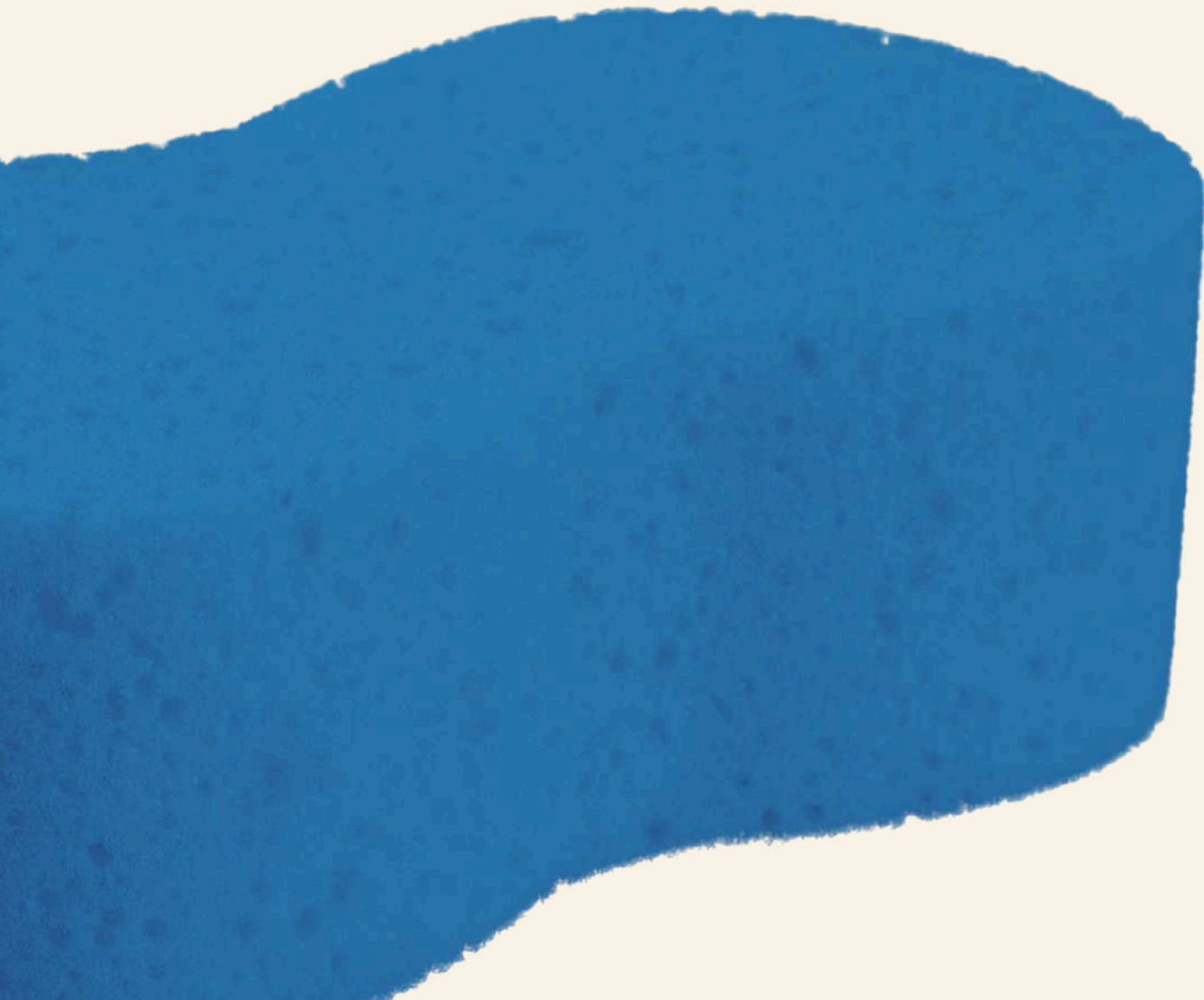
Identify the role you typically
play in managing anxiety



PATTERN 2: How anxiety shows up in you

1 #

THE
SPONGE



PATTERN 2: How anxiety shows up in you



2#

THE
FIXER

PATTERN 2: How anxiety shows up in you

3#

THE
CONDUIT



PATTERN 2: How anxiety shows up in you

4#

THE
FIGHTER



TWO QUESTIONS

Why does your anxiety show up in a particular way?



TWO QUESTIONS

Why does your anxiety show up in a particular way?

What would need to change when you get home to create/protect space to pray, prep and innovate?

